

# CELEBRATING THE UFB NETWORK COMPLETION

**FAST, RELIABLE BROADBAND INTERNET HAS BECOME A UBIQUITOUS PART OF EVERYDAY LIFE FOR AOTEAROA NEW ZEALAND OVER THE PAST DECADE, PROVIDING ACCESS TO ONLINE EDUCATION, SOCIAL CONNECTION, WORK AND TRADE - AND A VITAL LIFELINE THROUGH THE COVID-19 PANDEMIC.**

CIP is celebrating the completion of New Zealand's world leading, Ultra Fast Broadband (UFB) fibre optic network on time and under budget to reach 87 percent of population.

The UFB roll out was completed in December 2022, bringing high-speed fibre broadband to 412 towns and cities. Uptake is currently at 73 percent of UFB premises passed as of 30 June 2023, and it continues to increase.

The benefits of UFB are wide-reaching and help New Zealanders to not only engage in business, trade and tourism but has also been essential to support home education, social connection as well as business productivity over the last few years. The programme was continually extended and at completion the final towns to be covered were small communities including townships such as Haast, Ōwhango, Tuatapere and Eketāhuna.

CIP's delivery partners Chorus, Northpower, Enable, and Tuatahi First Fibre took on the job of innovators to find cost-effective, deployment solutions to bring UFB to these locations and many more across the motu - particularly challenging towards the end of the roll-out.

Reaching these locations on time and under budget is an excellent achievement that shows the commitment by Government and delivery partners to expand fibre broadband across Aotearoa.

#### CELEBRATING TOGETHER

CIP joined delivery partner Chorus to celebrate the final fibres being installed in the network with an event held in December 2022 at Manea Footprints of Kupe in Opononi.

CHORUS

Northpower

enable  
fibre broadband

Tuatahi  
First Fibre



*Celebrating the last connection box in the network - Opononi, Northland*



The town - with a population of 280 - sits on the south shore of Hokianga Harbour on State Highway 12 in Te Tai Tokerau Northland. Wedged between the Opononi sand dunes across the harbour and the Waipoua Forest, its isolation is characteristic of many of the final towns covered in the build programme.

At the event, mana whenua and community groups shared how fibre broadband will benefit their community and the impact it will have on their everyday lives, for example holding community meetings and hui online, growing businesses and tourism operations, and providing opportunities for rangatahi in education and health.

**CHANGING WITH THE TIMES**

Much has changed since the programme started in 2010. Broadband download capacity was around 10GB in 2010 and it has improved nearly 60-fold to 585GB in 2023 according to Chorus' Q4 results and is continuing to increase.

During this time, we have collectively experienced the arrival of online streaming services, three Rugby World Cups and a global pandemic: all of which have led to increases in data usage across the network.

The UFB network is designed and future-proofed for growth, with Chorus forecasting 1,000GB monthly data usage per household by 2025. Consumers can already buy 8 Gbps services to the home and with future optical technology, upgrade speeds and capacity are largely unconstrained.

**REINVESTING FUNDS FOR PUBLIC GOOD**

Since 2010, \$1.75 billion in Government funding has been invested in UFB, with the total cost exceeding \$5.5 billion including co-funding from delivery partners.

One of the innovative aspects of the programme has been the recycling funding structure.

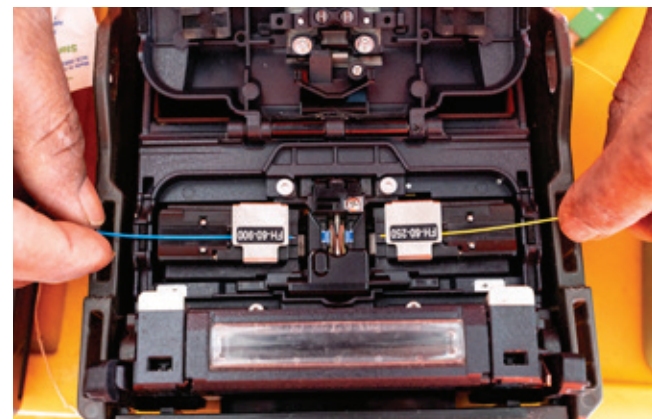
Of the original investment made, \$390 million of Government funding has been returned and reinvested.

Repayments were recycled back into further UFB extensions and also rural wireless broadband, resulting in more communities enjoying the benefits of reliable fibre broadband as well as rural wireless broadband.

*Chorus Hikuwai Bridge rebuild 2023*



*Fibre fusion splicer*



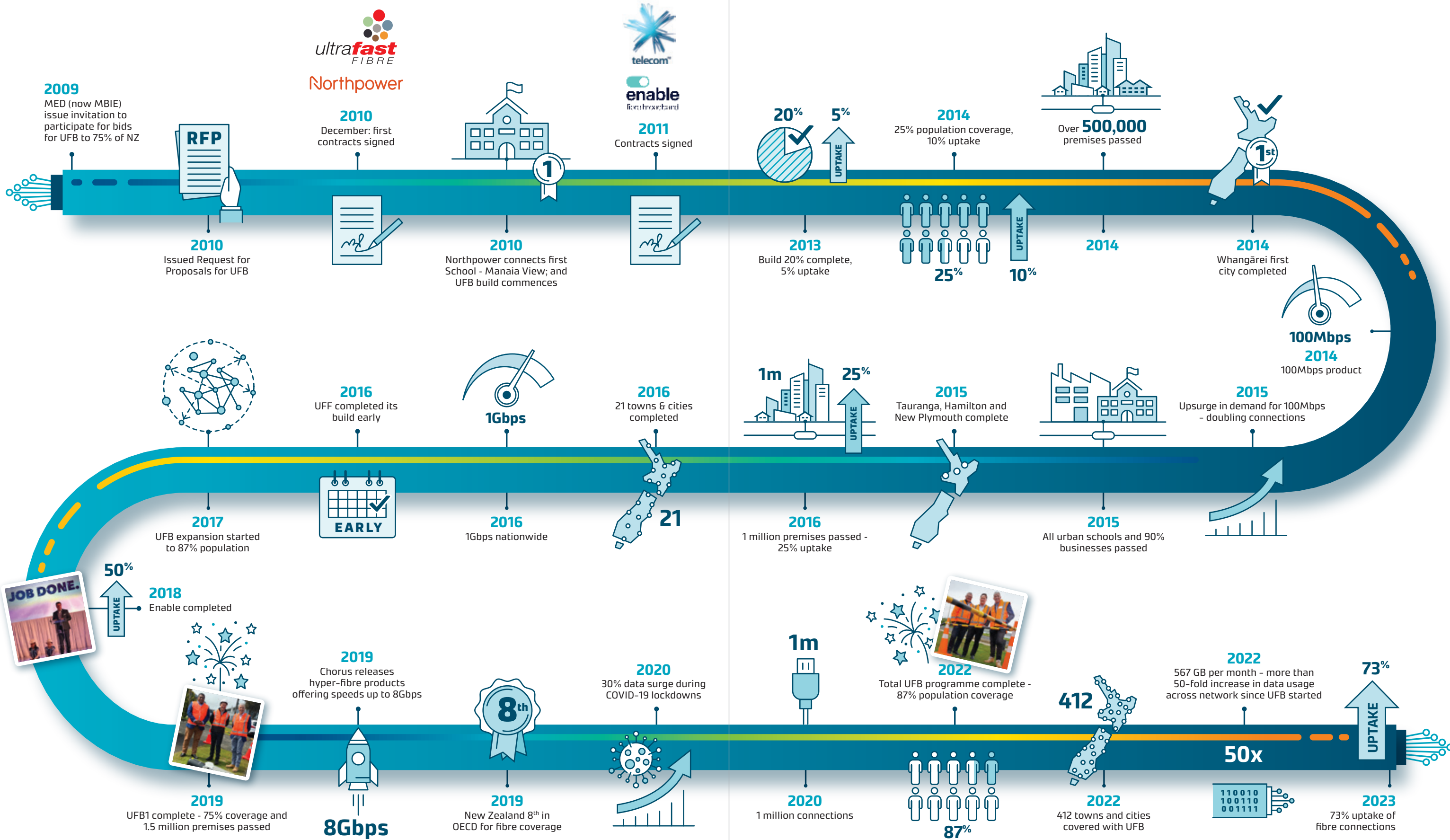
*Mania School, Whangarei, first school connected to UFB 2010*



*Fibre joint management system - connecting household fibre to the network*



# UFB THOUGH THE YEARS: 2009 - 2023





# 412 UFB CITIES AND TOWNS COMPLETE

Over 1.8 million homes and businesses or 87 percent of the population now have access to world-class broadband connectivity. Uptake of this service is at 73 percent and continues to increase.

